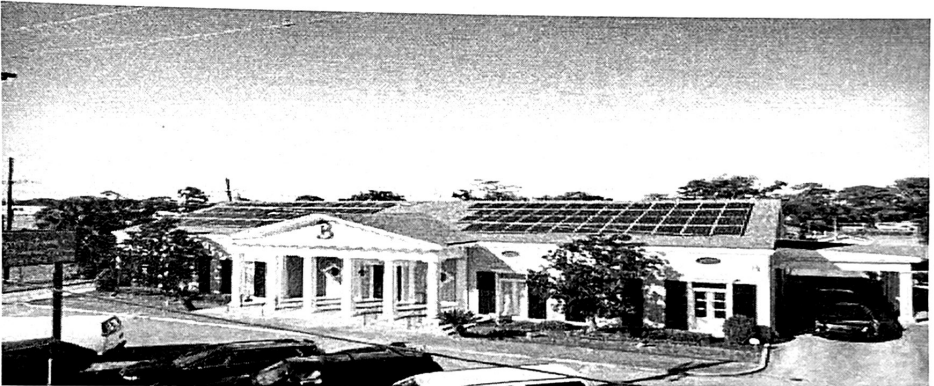


5001 Chef Menteur Hwy., New Orleans, LA 70126
(504) 282-0600



4800 Downman Road, New Orleans, LA 70126
(504) 282-1202



GENERAL PRICE LIST

These prices are effective as of Jan. 1, 2025, and are subject to change without notice.

The goods and services shown herein are those we can provide to our customers. You may choose only the items you desire. However, any funeral arrangements you select will include a charge for our basic services and overhead. If legal or other requirements mean you must buy any items you did not specifically ask for, we will explain the reason in writing in the statement we provide describing the funeral goods and services you selected.

MERCHANDISE

Many different styles of caskets and alternative containers are available, prices vary.

Caskets and Other Containers

Casket Price Range-Adult.....\$ 1,150.00 and up

See Casket Price list for descriptions

Child/Infant Casket Price Range.....\$ 150.00 and up

Rental Casket Selection.....\$ 950.00 and up

Outer Burial Container Selection Range\$ 650.00 and up

Other Merchandise

Register Book.....\$15.00 and up

Acknowledgement Cards.....\$ 15.00

Prayer Cards (per 100).....\$50.00 and up

Cross/Crucifix\$ 25.00

Pallbearer Gloves (6 pairs).....\$ 36.00

Air Tray/Shipping Combo.....\$375.00

Disaster/Protective Pouch.....\$150.00

Funeral Service Programs.....VARIES

Video Tribute.....\$275.00

CREMATION SERVICE AND MERCHANDISE FEES

Crematory Fee.....\$ 475.00 and up

Pacemaker Removal/Disposal.....\$ 75.00

Remains-Preparation for Identification.....\$ 125.00 and up

Securing Fingerprints/Hair Sample.....\$ 75.00

Transfer: Cremated Remains to Customer provided

cremation full size urn.....\$ 40.00

Cremation Merchandise

Cremation Full Size Urn Range.....\$ 150.00 and up

Urn Keepsake.....\$ 40.00 and up

Alternative Container-Cardboard.....\$ 25.00 and up

Mailing of Cremated Remains.....\$ 175.00 and up

Delivery of Cremated Remains(within 25 miles).....\$ 150.00

SERVICES

Basic Professional Services of Funeral Director and Staff

.....\$ 1, 695.00.....

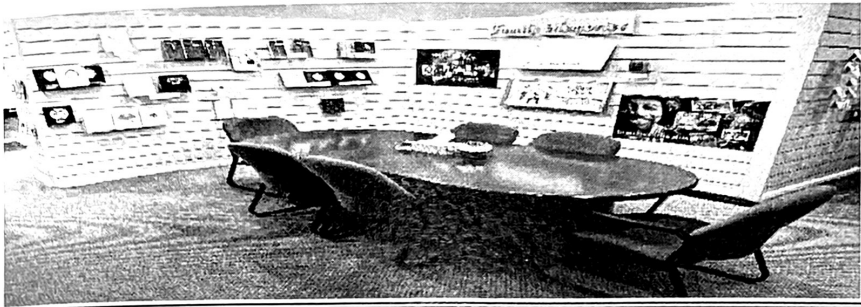
This is the basic charge to each family we serve for our professional expertise in assisting them. It includes, but is not limited to, a proportionate share of the taxes, licenses, utilities and business expenses necessary to serve the public in a professional manner. Also included in this charge is the consultation with the family, clerical and administrative service, preparation and filing of necessary permits, consultation with the clergy, cemetery, crematory or common carrier, and planning the funeral. There will be an additional charge for the direction and supervision of each service requested or required. This fee for our basic services and overhead will be added to the total cost of the funeral arrangements you select. (This fee, or a portion thereof, is already included in our charges for direct cremations, service of remembrance, immediate burials, and forwarding or receiving of remains.)

Embalming.....\$ 750.00

Except in certain special cases, embalming is not required by law. Embalming may be necessary, however, if you select certain funeral arrangements, such as a funeral with viewing. If you do not want embalming, you usually have the right to choose an arrangement that does not require you to pay for it, such as direct cremation or immediate burial. Embalming is a chemical process, which provides temporary preservation of the body and eliminates certain health hazards. A person licensed by this state must complete this procedure.

OTHER CARE OF DECEASED

Washing/disinfecting un-embalmed remains..... \$125.00 & UP
Dressing, Casketing and Cosmetology..... \$ 225.00
Post Autopsy Care..... \$ 250.00
Post Organ Donation Care..... \$ 350.00
Restoration Cost (per hour)..... \$ 95.00
Refrigeration (Per day after 30 hours).....\$ 75.00
Hairstylist/Barber..... \$ 65.00 and up



SERVICE OPTIONS

Receiving Remains from another Funeral Home \$ 2,300.00

Reduced Professional Services-Funeral Director/Staff.....	\$ 625.00
Transfer of Remains-Airport to Funeral Home.....	\$ 350.00
Hearse/Driver for Services.....	\$ 350.00
1 hour Viewing/Visitation.....	\$ 325.00
Funeral Director Fee.....	\$ 650.00

Forwarding Remains to another Funeral Home \$ 2350.00

Reduced Professional Services-Funeral Director/Staff.....	\$ 625.00
Removal of Deceased.....	\$ 350.00
Embalming.....	\$ 750.00
Air Tray/Combo Unit.....	\$ 275.00
Hearse.....	\$ 350.00

Direct Cremation \$ 1,595.00

Reduced Professional Services-Funeral Director/Staff.....	\$ 745.00
Removal of Deceased.....	\$ 350.00
Alternative Cardboard Container.....	\$ 25.00
Crematory Fee with Temporary Container.....	\$ 475.00

Witnessing of Cremation..... \$200.00

*Alternative containers can be used to arrange direct cremation and the container can be supplied by our clients. Note: alternative containers must encase the body and, at a minimum, need to be made of materials like fiberboard or composition materials (with or without an outside covering). The containers provided by the Boyd Family Funeral Home are an alternative container as described or any wood casket from our Casket Price List. We own and operate our own Crematorium. Deceased over 250 lbs. will incur additional cost.

Direct Cremation (Client provided container) \$ 1,570.00
Direct (Immediate) Burial W/O Casket \$ 1,975.00
 Reduced Professional Service Fee..... \$ 625.00
 Removal of Decease.....\$ 350.00
 Use of Hearse..... \$ 350.00
 Funeral Director Professional Services.....\$ 650.00

Other Merchandise and Services

Doves/Dove Release..... \$225.00 (3) and up/ \$50.00 each
 Balloon & Butterfly Release..... VARIES
 Custom Blanket/Throw or Panel..... \$ 295.00

The following is the estimated service and merchandise cost for items selected by: _____.
 The service and merchandise cost estimate does not include permits, taxes and/or any fees or items not specifically listed.

ESTIMATED SERVICE AND MERCHANDISE COST

Service Package or Item	Estimated Cost
TOTAL	\$

Funeral Director: _____

Date: ____/____/____ Please respond by: ____/____/____

Thank You!

PRICES DO NOT REFLECT ANY AT NEED OR PRENEED PACKAGE DISCOUNTS!

OTHER SERVICES

Burial Transit Permit.....	\$ 2.00
Newspaper Notice.....	(Varies)
Police Escorts.....	\$240.00 & Up

Facility Rental

Use of Facility for Funeral Service.....	\$ 200.00
Damage Deposit for Use of Facility.....	\$ 500.00
Celebration Hall.....	Starts at \$ 550.00 ((\$300.00 Refundable Deposit not included)
Use of Café.....	\$ 295.00
Saturday Service Fee.....	\$ 300.00
Insurance Assignment Fee.....	starting @ 6% of total Ins. Assigned
Security Detail for Funeral Service.....	\$ 450.00 and Up

DIRECTING OF SERVICES AND USE OF FACILITY

Use of Facility and/or Staff for Evening Visitation.....	\$ 575.00
Staff & Set Up for Viewing/Visitation (Up to 1 hour)	\$ 325.00
Each Additional Hour of Visitation.....	\$ 195.00
Funeral Director and Staff for Funeral or Memorial Service	\$ 850.00
Equipment/Staff for Visitation/Viewing at another Facility.	\$ 325.00
Funeral Director and Staff for Funeral or Memorial Service At another Facility.....	\$ 650.00
Funeral Director/Staff-Conducting Graveside Service.....	\$ 650.00
Funeral Director/Staff-Overtime Charges Holidays and Sundays-Conducting Services and/or arrangements.....	\$ 950.00
Funeral Director Charges-Out of Town Services.....	\$ 650.00

Automotive, Equipment, Services and Other Charges

Removal/Transfer-Remains to Funeral Home.....	\$ 350.00
Two-man Removal/Oversize Removal.....	\$ 100.00
Clergy/Lead Vehicle.....	\$ 295.00
Use of Utility Vehicle.....	\$ 100.00
Limousine/Driver 6 to14 Passengers (4 hours) ...	\$ 575.00 & UP
.....Overtime per Hr.....	\$125.00 & UP
Transportation Charge-Mileage (per mile)	\$ 3.50
Transfer Remains from/to Off Premises Location.....	\$ 350.00
Two Man Removal/Overnight Removal.....	\$ 100.00