

Charbonnet Family Services

GENERAL PRICE LIST

The goods and services shown below are those we can provide to our customers. You may choose only the items you desire. However, any funeral arrangement you select will include a charge of our basic services. If legal or other requirements mean you must buy any items you did not specifically ask for. We will explain the reason in writing on the statement we provide describing the funeral goods and services you selected.

PROFESSIONAL SERVICES

(Funeral Director & Staff)

Basic services \$1,835

This fee for our basic services will be added to the cost of the funeral arrangement you select. (This fee is already included in our charges for a direct cremation, immediate burial and forwarding or receiving remains. You will not be charged again for our services if you selected those items.)

Arrangement interview, coordination of service plan and 24 hour availability of personnel

Bookkeeping, accounting fee and general clerical administration

Securing, recording an authorization and permit, as necessary

Coordination of service plans with cemetery crematorium or other parties involved in the final disposition.

Additional Services of Funeral Director and Staff

Supervision, staff and equipment for a funeral service at facilities other than funeral home \$670

Supervision and staff for graveside service (no equipment provided) \$300

Prices are effective as of January, 2025

Preparation of Remains: \$1,007

Embalming

Accept in certain special cases, embalming is not required by law. Embalming may be necessary however, if you select certain funeral arrangements such as a funeral with viewing. If you do not want embalming, you usually have the right to choose an arrangement that does not require you to pay for it. Such as direct cremation or immediate burial.

Other preparations of Remains \$317

Restorative Art (Hourly) * \$325

PLEASE NOTE: After 5 days you may incur a storage fee of \$200 per day

Use of Facilities and Equipment

Use of Facilities

Use of facilities and staff for viewing per day \$120

Use of facilities and staff for funeral ceremony \$794

Use of facilities and staff for memorial service \$550

Use of equipment and staff for graveside service \$475

Use of Automotive equipment

Transfer of remains to funeral home \$375

Clergy Car (3 Hours) \$200

Family Limousine (3 Hours) \$450

Hearse:

A. Motorized

(Based on average service of 3 hours) \$600

Each additional hour over 3 hours \$150

B. Horse Drawn Hearse \$900

(Based on average of three hours

Each additional hour over 3 hours \$150

Additional Transportation cost at other facilities \$375

Service Utility Vehicle \$180

Transportation to/from

Common Carrier \$375

All transportation cost based on a 10 mile radius one way any additional mileage @ \$2.50 mile

Other Merchandise and Services:

Memorial Book	\$65
Acknowledgment Cards	\$40
Crucifix or Cross	\$56
Prayer cards (depending upon availability) (per 100 count)	\$85

Alternative container (cardboard for cremation only)	\$250
Unfinished Wood Box	\$410
Air Tray	\$410
Shipping Container	\$410
Sanitary Pouch (Mandatory use by Coroner's Office)	\$160
Cremation Urn (price range)	\$185 to \$1,500

Other Services:

Forwarding of Remains to Another Funeral Home \$4,002

This charge and close transfer of remains, basic services to include Funeral Director and staff, embalming, shipping container (not a casket) or air tray and local ground transportation of remains to common carrier. It does not include any services prior to forwarding of the remains or shipping charges.

Chapel Service \$3,904

This charge includes local ground transportation of remains from common carrier, basic services of Funeral Director and staff, use of facilities and staff for viewing and for funeral ceremony, motorized hearse to cemetery and utility vehicle. It does not include any merchandise or cemetery charges.

Graveside Services \$1,765

This charge includes local ground transportation of remains from common carrier, basic services of Funeral Director and staff, use of equipment and staff for graveside service, motorized hearse to cemetery and utility vehicle. It does include merchandise or cemetery charges.

These prices are effective as of January, 2025

Immediate Burial:

Price range \$2,585 to \$22,587

Our charge for an immediate burial include transfer of the remains, basic services of Funeral Director and staff and local transportation of remains to cemetery. It does not include embalming, services of staff, use of facilities for viewing, funeral ceremony, cemetery charges or any merchandise.

1. Immediate burial with casket \$3,840 to \$22,587
2. Immediate burial with unfinished wood box \$2,995
3. Immediate burial with casket provided by purchaser \$2,585

Direct Cremations:

Price range \$2,985 to \$22,985

The charge for a direct cremation include transfer of the remains, basic services of Funeral Director and staff, the cremation fee, and local transportation to crematorium. It does not include embalming, services of staff, use of facilities for viewing, the funeral ceremony, medical examiner's permit or any merchandise. If you want to arrange a direct cremation, you can use an alternative container. Alternative containers encase the body and can be made of materials like fiberboard, composition material (with or without an outside covering). The containers we provide are an unfinished wood box or heavy cardboard.

1. Direct cremation with heavy cardboard box \$3,240
2. Direct cremation with unfinished wood box \$3,395
3. Direct cremation with casket or alternative container provided by purchaser \$2,985

Charbonnet-Labat-Glapion Funeral Home

1615 St. Philip St.
New Orleans, LA 70116
Phone: (504) 581-4411
Fax: (504) 581-4434

4917 E. Judge Perez Drive
Violet, LA 70092
(504) 304-1520
Fax: (504) 304-1520

Coping With Your Loss

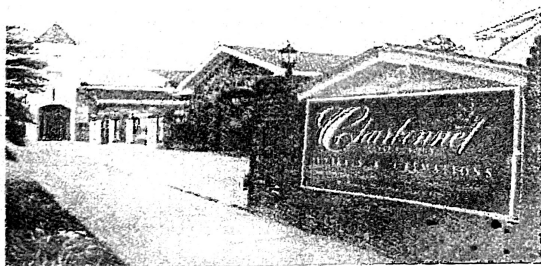
Losing someone or something you love is very painful. After a significant loss, you may experience all kinds of difficult and surprising emotion, such as shock, anger and guilt. Sometimes it may feel like the sadness will never let up. While these feelings can be frightening and overwhelming, they are normal reactions to loss. Accepting them as part of the grieving process and allowing yourself to feel what you feel is necessary for healing. There is no right or wrong way to grieve--but there are healthy ways to cope with the pain. You can get through it! Grief that is expressed and experienced has a potential for healing and eventually can strengthen and enrich life.

Get Support if Your Grief Overwhelms You

The single most important factor in healing from loss is having the support of other people. Even if you aren't comfortable talking about your feelings under normal circumstances, it's important to express them when you're grieving. Sharing your loss makes the burden of grief easier to carry. Wherever the support comes from, accept it and do not grieve alone. Connecting to others will help you heal. Here are some bereavement support group websites that may be able to help:

www.griefnet.org, www.centerforloss.com,
www.growthhouse.org, www.willowgreen.com,
www.nlpc.org

Historic Treme 1615 St. Philip Street



Violet - St. Bernard